

**UNIVERSITAS SUMATERA UTARA**

- P E T A I K O N I K -

# UNIVERSITAS SUMATERA UTARA

- P E T A I K O N I K -



KAMPUS PADANG BULAN  
1.160.000 M<sup>2</sup>

KAMPUS KWALA BEKALA  
3.000.000 M<sup>2</sup>

15 FAKULTAS

164 PROGRAM STUDI

1.504 DOSEN

- DOSEN TETAP 1.414
- DOSEN TETAP NON PNS 21
- DOSEN LUAR BIASA 21
- DOSEN TIDAK TETAP NON PNS 24

52.440 MAHASISWA

- SARJANA 34.713
- PASCA SARJANA 7.783
- DOKTORAL 983
- SPEKIALIS 1.099
- DIPLOMA 4.050
- PROFESI 3.812

1962 PEGAWAI

- TENAGA KEPENDIDIKAN 938
- PEGAWAI HONORER 1024

# UNIVERSITAS SUMATERA UTARA

- P E T A I K O N I K -



**15 FAKULTAS**

**164 PROGRAM STUDI**



- S1 1
- S2 4
- S3 1
- P 19



- S1 1
- S2 4
- S3 1



- S1 6
- S2 4
- S3 1



- S1 7
- S2 6
- S3 5



- S1 3
- S2 3
- S3 3
- D 2
- P 1



- S1 1
- S2 1
- S3 1
- P 4



- S1 10
- S2 4
- S3 1



- S1 4
- S2 4
- S3 4
- D 5



- S1 7
- S2 4
- S3 1
- D 1



- S1 1
- S2 1
- S3 1



- S1 1
- S2 1
- S3 1
- D 1
- P 1



- S1 1
- S2 2



- S1 1
- S2 1
- S3 1
- P 1



- S1 2
- S2 4
- S3 1



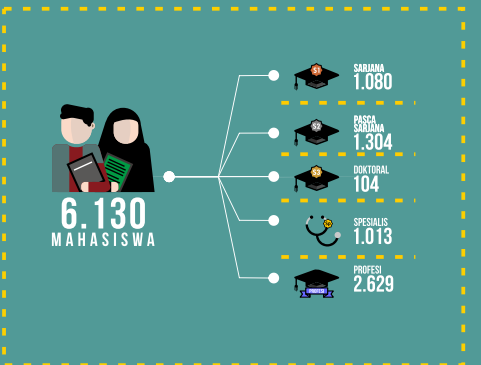
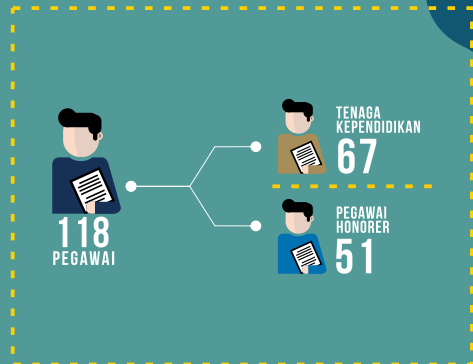
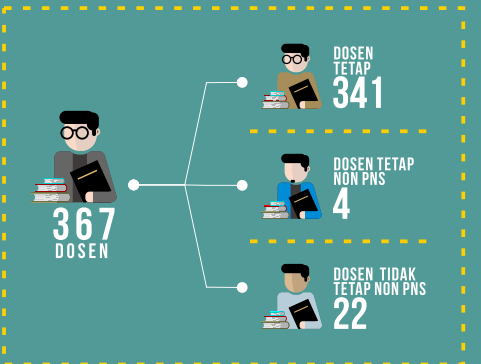
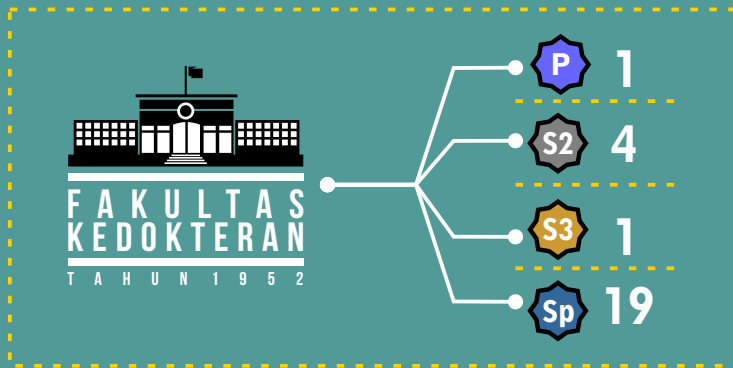
- S1 1

**S1** Sarjana    **S2** Pascasarjana    **S3** Doktoral    **D** Diploma    **P** Profesi

# UNIVERSITAS SUMATERA UTARA

## FAKULTAS KEDOKTERAN SEJAK 1952

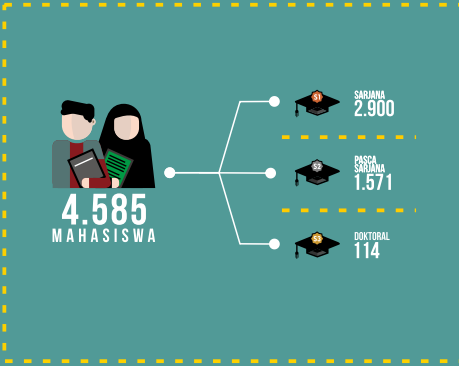
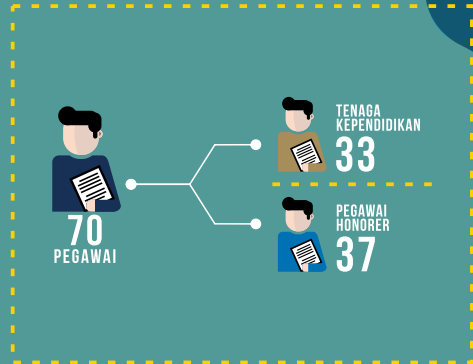
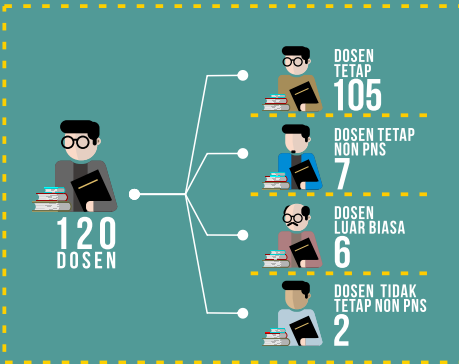
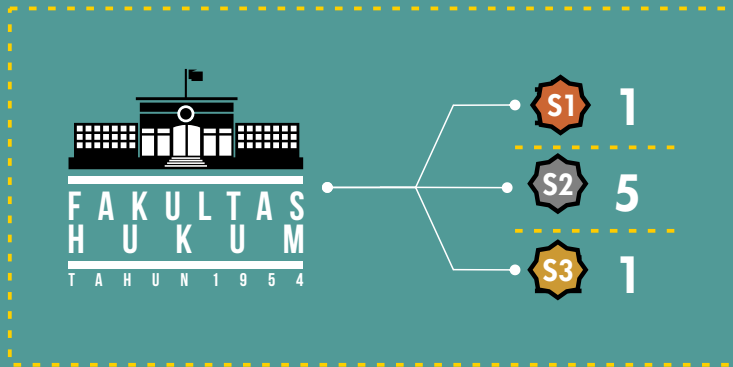
P E T A I K O N I K



# UNIVERSITAS SUMATERA UTARA

## FAKULTAS HUKUM SEJAK 1954

### P E T A I K O N I K

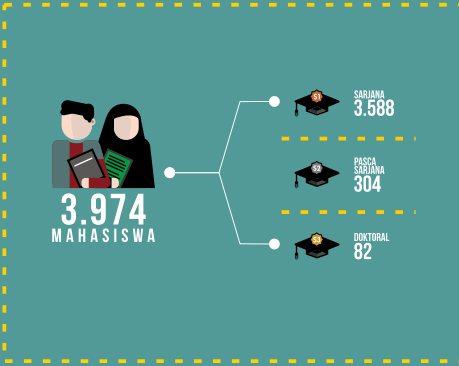
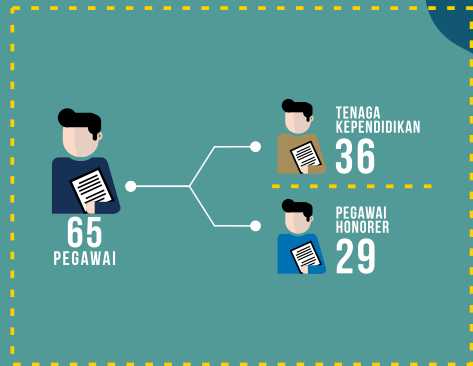
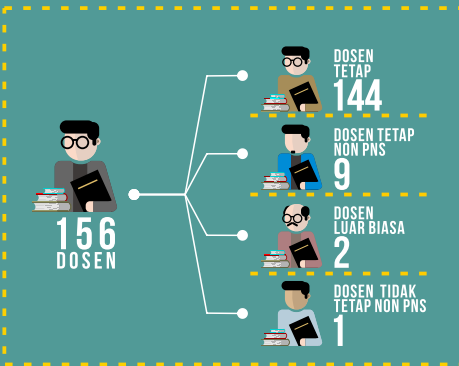
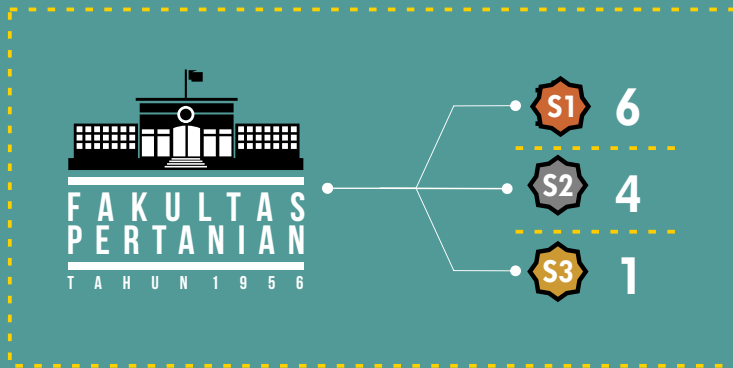


- S1 Sarjana
- S2 Pascasarjana
- S3 Doktoral
- D Diploma
- P Profesi
- Sp Spesialis

# UNIVERSITAS SUMATERA UTARA

## FAKULTAS PERTANIAN SEJAK 1956

P E T A I K O N I K

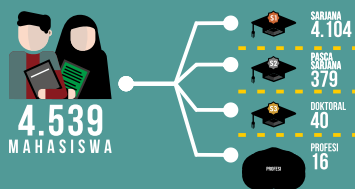
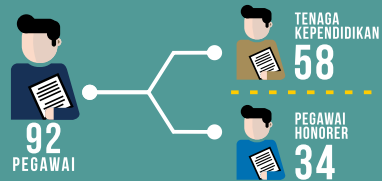
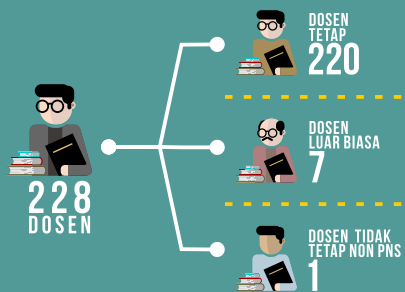
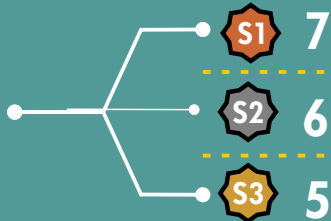


- S1** Sarjana
- S2** Pascasarjana
- S3** Doktoral
- D** Diploma
- P** Profesi
- Sp** Spesialis

# UNIVERSITAS SUMATERA UTARA

## FAKULTAS TEKNIK SEJAK 1959

### P E T A I K O N I K



**S1**  
Teknik Industri  
Teknik Sipil  
Teknik Kimia  
Arsitektur  
Teknik Mesin  
Teknik Elektro  
Teknik Lingkungan

**S2**  
Arsitektur  
Teknik Elektro  
Teknik Industri  
Teknik Kimia  
Teknik Mesin  
Teknik Sipil

**S3**  
Ilmu Teknik Mesin  
Ilmu Teknik Industri  
Ilmu Teknik Sipil  
Ilmu Teknik Kimia  
Ilmu Teknik Arsitektur

**S1** Sarjana

**S3** Doktor

**P** Profesi

**S2** Pascasarjana

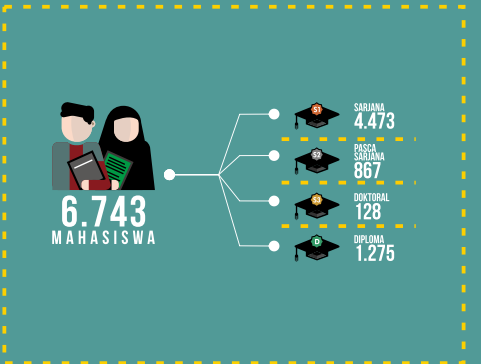
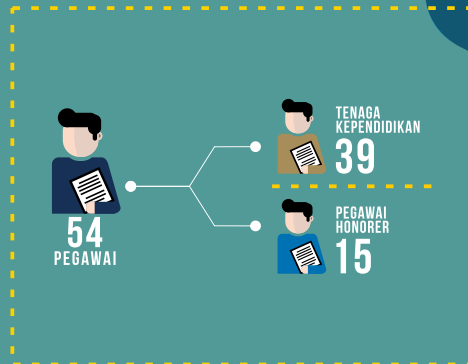
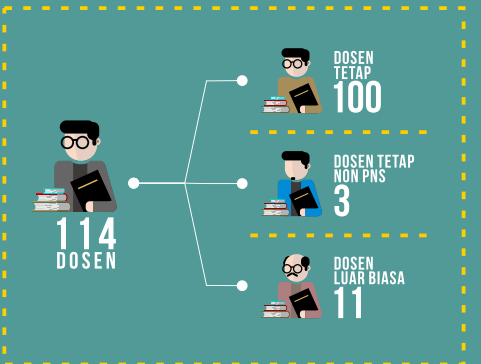
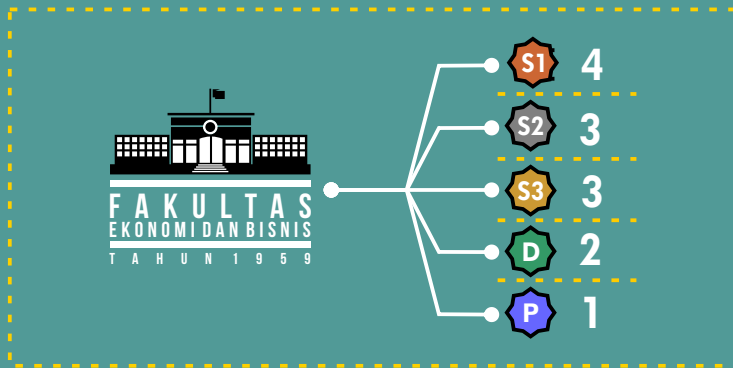
**D** Diploma

**Sp** Spesialis

# UNIVERSITAS SUMATERA UTARA

## FAKULTAS EKONOMI DAN BISNIS SEJAK 1959

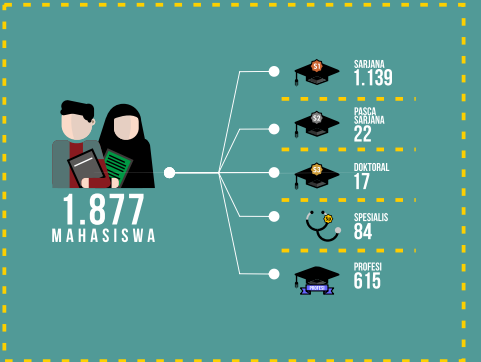
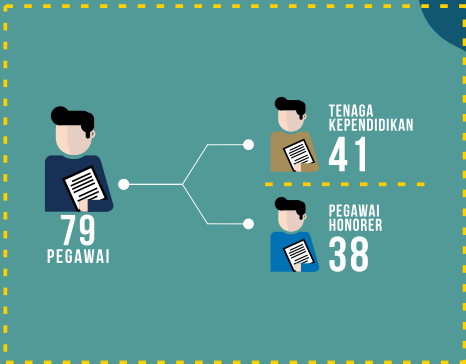
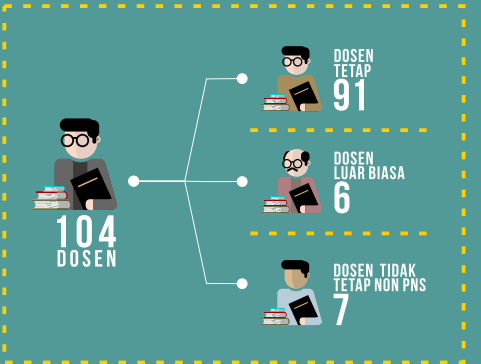
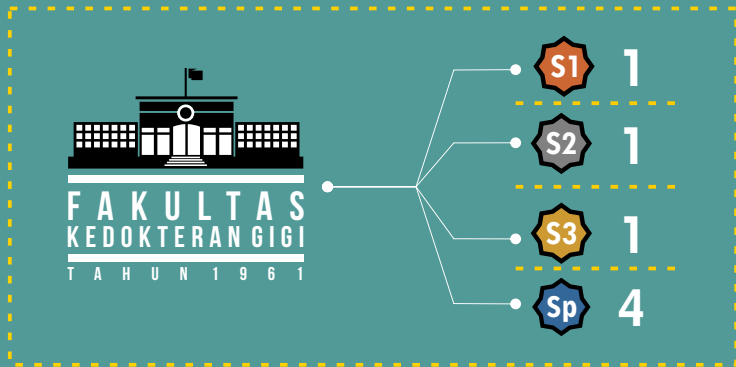
P E T A I K O N I K



# UNIVERSITAS SUMATERA UTARA

## FAKULTAS KEDOKTERAN GIGI SEJAK 1961

P E T A I K O N I K



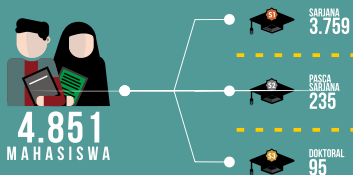
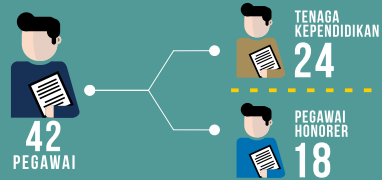
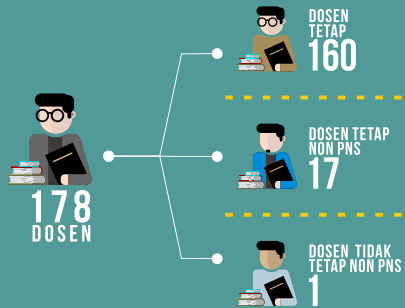
# UNIVERSITAS SUMATERA UTARA

## FAKULTAS ILMU BUDAYA SEJAK 1965

P E T A I K O N I K



**S1** 10  
**S2** 4  
**S3** 1



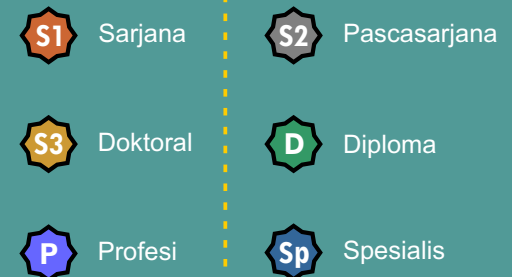
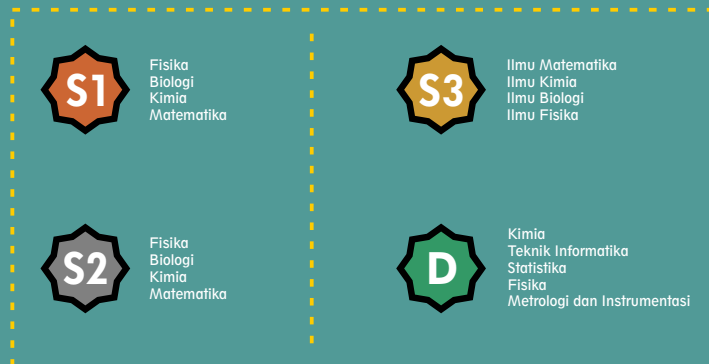
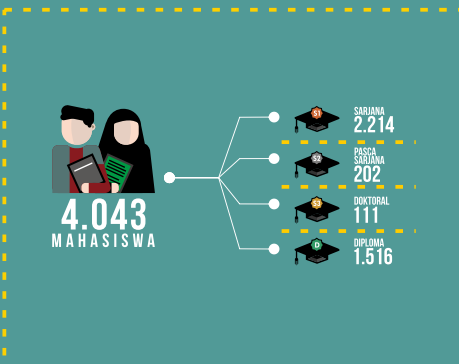
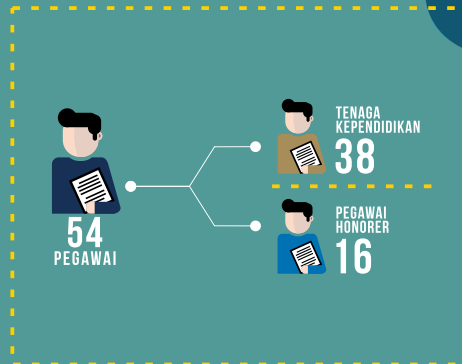
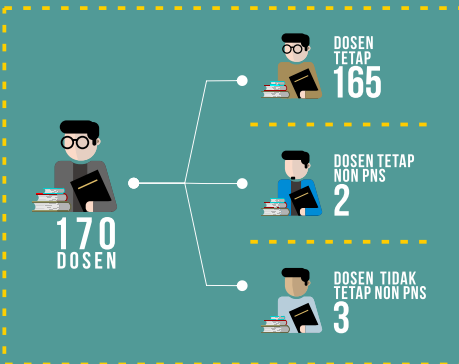
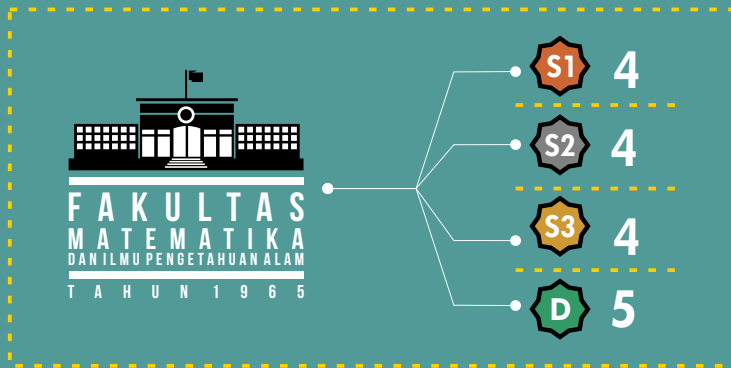
- S1** Sastra Indonesia  
 Sastra Daerah untuk Sastra Melayu  
 Sastra Daerah untuk Sastra Batak  
 Sastra Arab  
 Sastra Inggris  
 Ilmu Sejarah  
 Etnomuskologi  
 Sastra Jepang  
 Sastra Cina  
 Ilmu Perpustakaan
- S2** Ilmu Sejarah  
 Ilmu Linguistik  
 Penciptaan dan Pengkajian Seni  
 Bahasa Inggris
- S3** Ilmu Linguistik

- S1** Sarjana
- S2** Pascasarjana
- S3** Doktoral
- D** Diploma
- P** Profesi
- Sp** Spesialis

# UNIVERSITAS SUMATERA UTARA

FAKULTAS MATEMATIKA DAN ILMU PENGETAHUAN ALAM SEJAK 1965

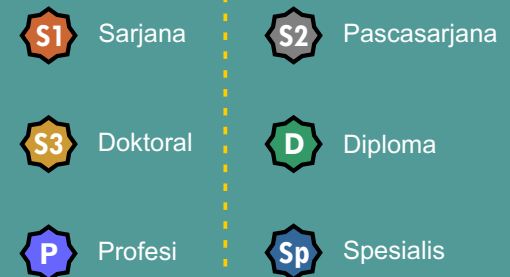
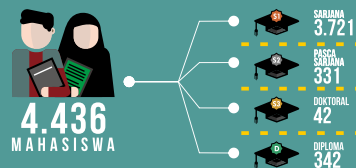
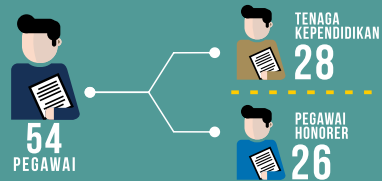
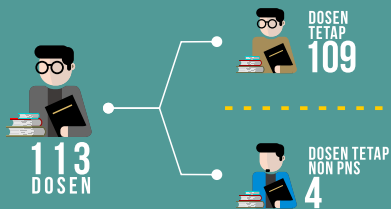
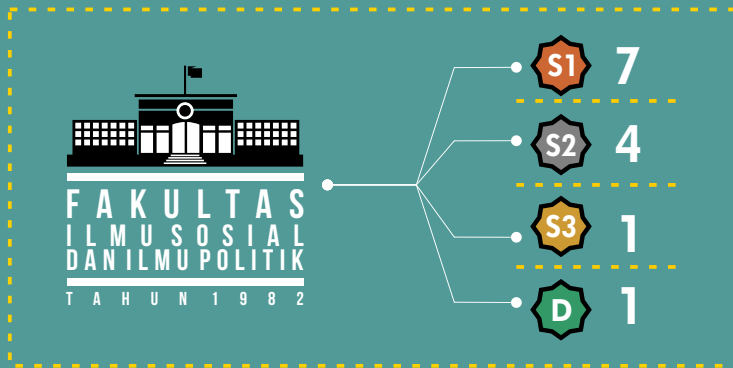
## P E T A I K O N I K



# UNIVERSITAS SUMATERA UTARA

## FAKULTAS ILMU SOSIAL DAN ILMU POLITIK SEJAK 1982

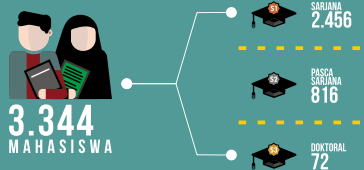
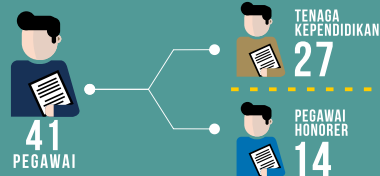
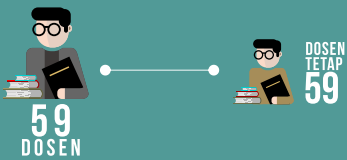
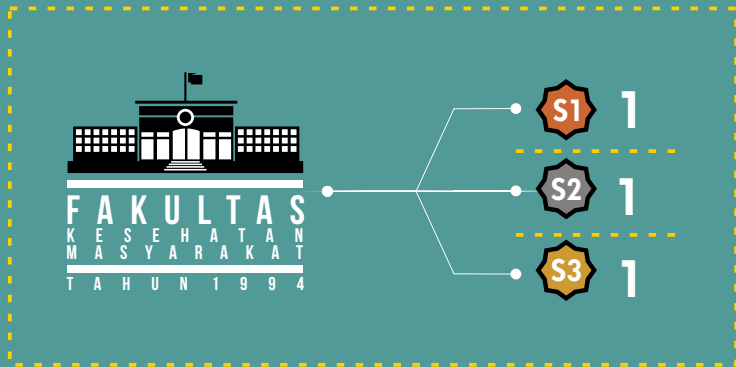
### P E T A I K O N I K



# UNIVERSITAS SUMATERA UTARA

## FAKULTAS KESEHATAN MASYARAKAT SEJAK 1994

### P E T A I K O N I K



**S1** Kesehatan Masyarakat

**S2** Ilmu Kesehatan Masyarakat

**S3** Ilmu Kesehatan Masyarakat

**S1** Sarjana

**S2** Pascasarjana

**S3** Doktoral

**D** Diploma

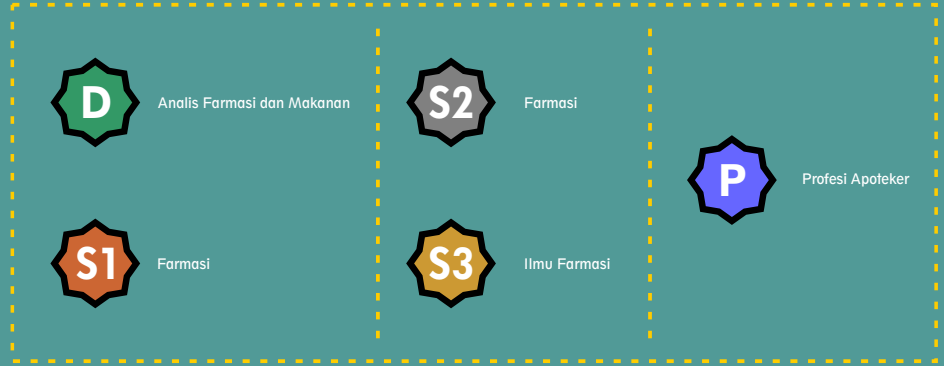
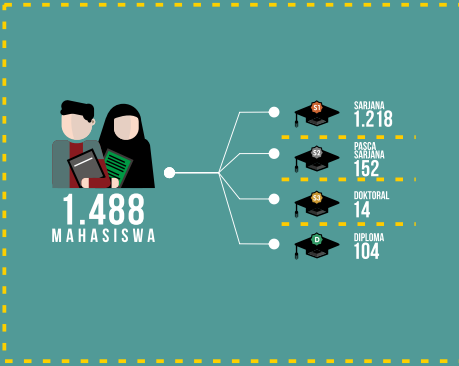
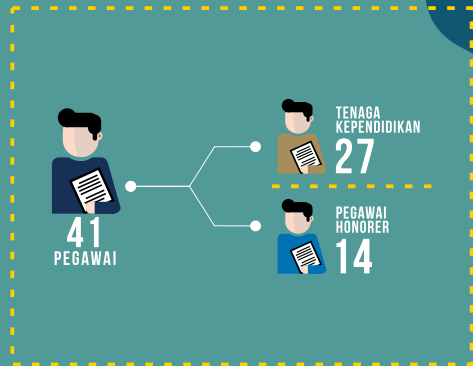
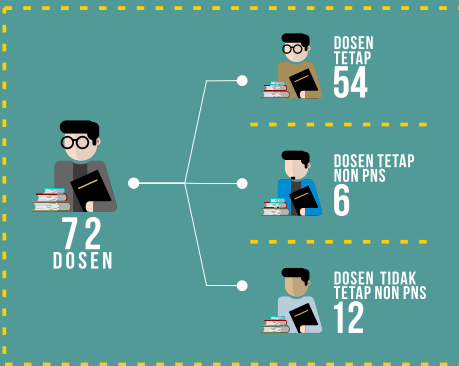
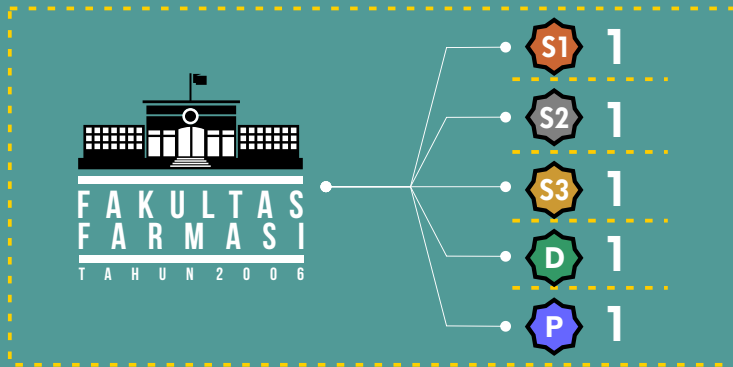
**P** Profesi

**Sp** Spesialis

# UNIVERSITAS SUMATERA UTARA

## FAKULTAS FARMASI SEJAK 2006

P E T A I K O N I K



# UNIVERSITAS SUMATERA UTARA

## FAKULTAS PSIKOLOGI SEJAK 2007

P E T A I K O N I K



**S1** 1  
**S2** 2



**59** DOSEN  
**44** DOSEN TETAP

**30** PEGAWAI  
**14** TENAGA KEPENDIDIKAN  
**16** PEGAWAI HONORER

**1.026** MAHASISWA  
**880** SARJANA  
**146** PASCA SARJANA

**S1** Psikologi

**S2** Magister Psikologi Profesi  
Magister Psikologi Sains

**S1** Sarjana

**S2** Pascasarjana

**S3** Doktoral

**D** Diploma

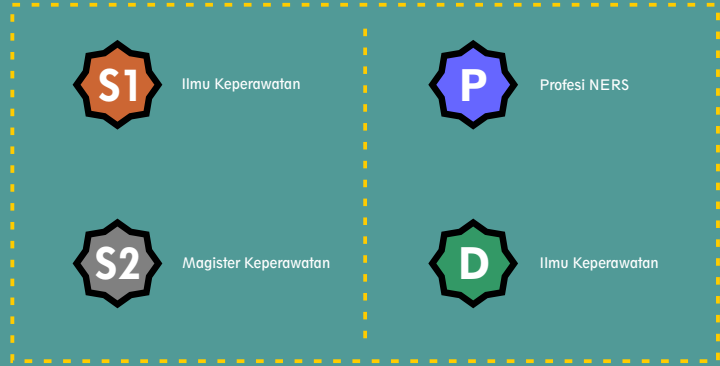
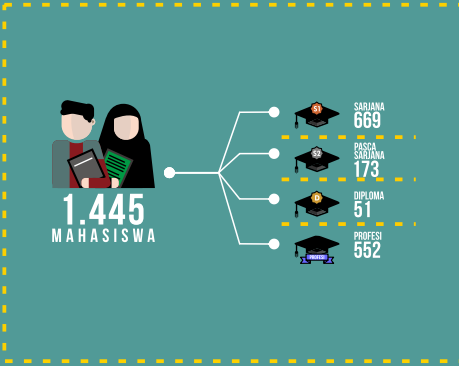
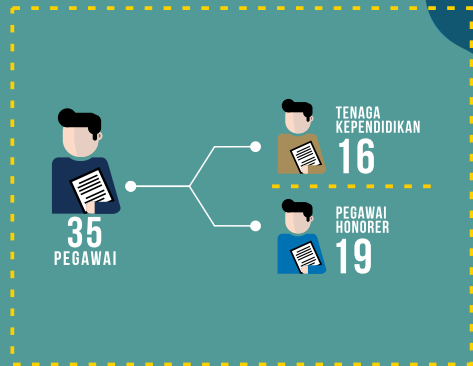
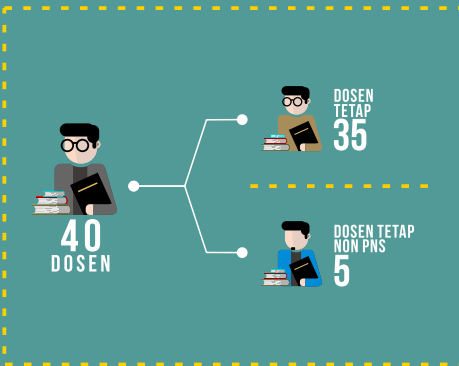
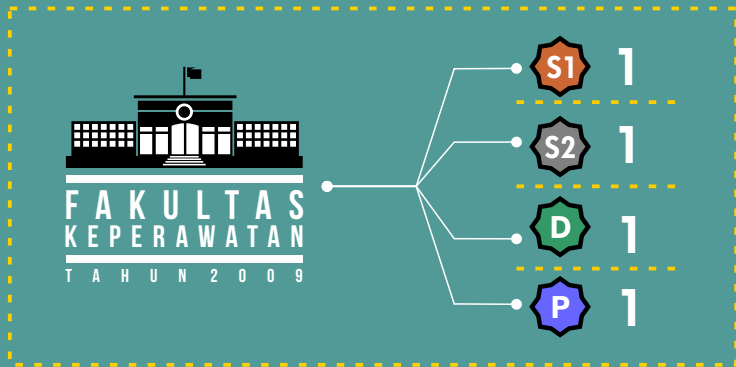
**P** Profesi

**Sp** Spesialis

# UNIVERSITAS SUMATERA UTARA

## FAKULTAS KEPERAWATAN SEJAK 2009

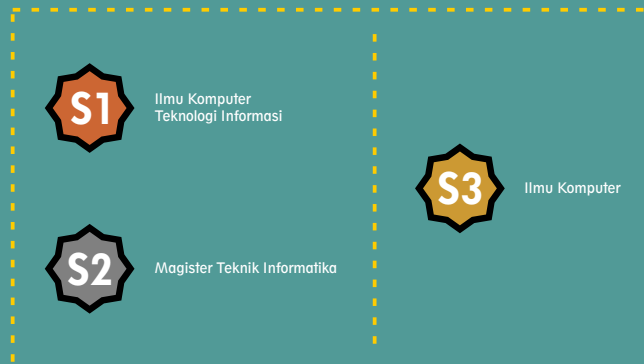
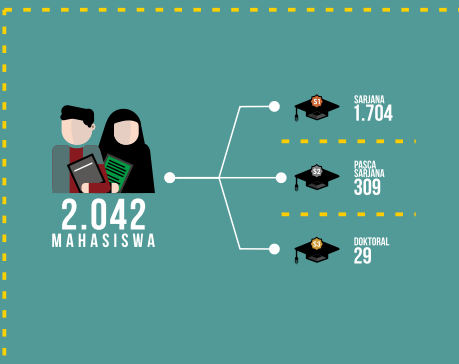
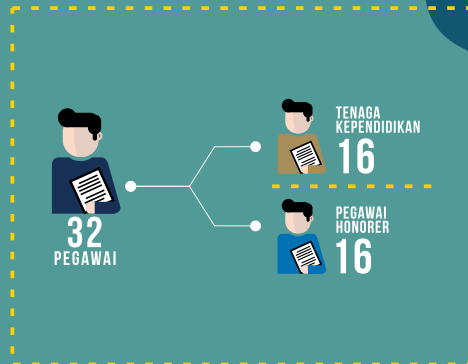
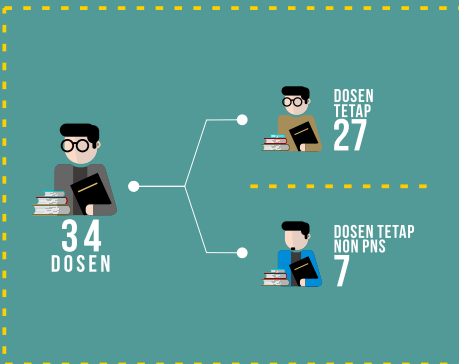
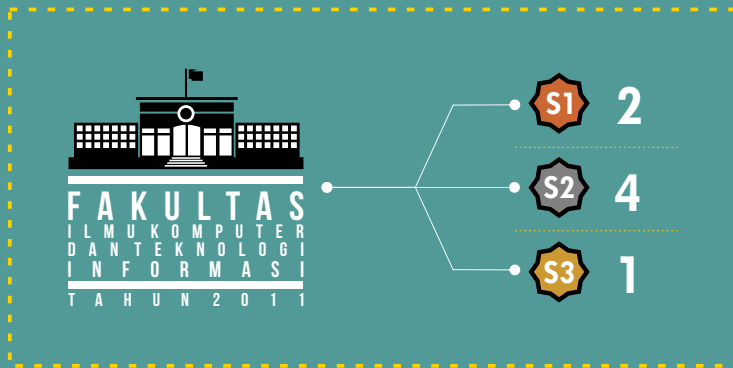
P E T A I K O N I K



# UNIVERSITAS SUMATERA UTARA

## FAKULTAS ILMU KOMPUTER DAN TEKNOLOGI INFORMASI SEJAK 2011

### P E T A I K O N I K



- S1 Sarjana
- S2 Pascasarjana
- S3 Doktoral
- D Diploma
- P Profesi
- Sp Spesialis

# UNIVERSITAS SUMATERA UTARA

## FAKULTAS KEHUTANAN SEJAK 2014

P E T A I K O N I K



S1 1



S1 Kehutanan

S1 Sarjana

S2 Pascasarjana

S3 Doktoral

D Diploma

P Profesi

Sp Spesialis

# UNIVERSITAS SUMATERA UTARA

## FASILITAS OLAHRAGA

